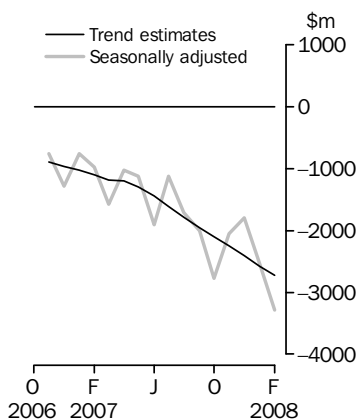


INTERNATIONAL TRADE IN GOODS AND SERVICES

AUSTRALIA

EMBARGO: 11.30AM (CANBERRA TIME) MON 7 APR 2008

Balance on Goods and Services



KEY FIGURES

	December 2007	January 2008	February 2008	Jan 08 to Feb 08 %
	\$m	\$m	\$m	change
BALANCE ON GOODS AND SERVICES				
Trend estimates	-2 405	-2 582	-2 723	-5
Seasonally adjusted	-1 792	-2 535	-3 289	-30
CREDITS (Exports of goods & services)				
Trend estimates	18 446	18 572	18 663	—
Seasonally adjusted	18 756	19 050	18 260	-4
DEBITS (Imports of goods & services)				
Trend estimates	20 851	21 155	21 386	1
Seasonally adjusted	20 548	21 585	21 548	—

— nil or rounded to zero (including null cells)

KEY POINTS

BALANCE ON GOODS AND SERVICES

- The trend estimate of the *balance on goods and services* was a deficit of \$2,723m in February 2008, an increase of \$141m (5%) on the revised deficit in January 2008.
- In seasonally adjusted terms, the *balance on goods and services* was a deficit of \$3,289m in February 2008, an increase of \$754m (30%) on the revised deficit in January 2008.
- The increase in the seasonally adjusted deficit was due to the fall in *goods and services credits*, mainly *non-rural and other goods*, outweighing the fall in *goods and services debits*, mainly *intermediate and other goods*.

CREDITS (EXPORTS OF GOODS & SERVICES)

- Seasonally adjusted, *goods and services credits* fell \$790m (4%) to \$18,260m. *Non-rural and other goods* fell \$774m (6%) and *rural goods* rose \$23m (1%). *Services credits* fell \$40m (1%).
- The fall in *non-rural and other goods* was driven by *metal ores and minerals*, which fell \$624m (18%) and *coal, coke and briquettes*, which fell \$281m (16%).

DEBITS (IMPORTS OF GOODS & SERVICES)

- Seasonally adjusted, *goods and services debits* fell \$37m to \$21,548m. *Intermediate and other goods* fell \$125m (1%) and *consumption goods* fell \$93m (2%) while *capital goods* rose \$269m (7%). *Services debits* fell \$89m (2%).
- The fall in *intermediate and other goods* was driven mainly by *processed industrial supplies n.e.s.*, which fell \$108m (6%) and *fuels and lubricants*, which fell \$78m (3%).

INQUIRIES

For further information about these and related statistics, contact the National Information and Referral Service on 1300 135 070 or Selvi Sekhar on Canberra (02) 6252 5540.

NOTES

FORTHCOMING ISSUES

<i>ISSUE</i>	<i>RELEASE DATE</i>
March 2008	6 May 2008
April 2008	5 June 2008
May 2008	3 July 2008
June 2008	31 July 2008
July 2008	4 September 2008
August 2008	2 October 2008

REVISIONS

Revisions were made to the previous seven months to incorporate the latest available data relating to merchandise trade and international trade in services.

In original terms, these revisions have:

- decreased the deficit on goods and services for January 2008 by \$216m
- increased the deficit on goods and services for 2006–07 by \$204m.

AVAILABILITY OF DETAILED SERVICES DATA

The trade in services data cubes, listed under Time Series Data on page 4, for data on a calendar year basis to 2007 will be updated in March 2008 issue.

ABBREVIATIONS

\$b	billion (thousand million) dollars
\$m	million dollars
ABS	Australian Bureau of Statistics
APEC	Asia Pacific Economic Co-operation
ASEAN	Association of South-East Asian Nations
n.e.s.	not elsewhere specified
n.i.e.	not included elsewhere
OECD	Organisation for Economic Co-operation and Development
SAR	Special Administrative Region
SITC	Standard International Trade Classification

Brian Pink
Australian Statistician

CONTENTS

page

Time series data 4

ANALYSIS

Analysis and comments 5

TABLES

INTERNATIONAL TRADE IN GOODS AND SERVICES – BALANCE OF PAYMENTS BASIS

1	Goods and services, summary, seasonally adjusted and trend estimates	9
2	Goods and services, summary, original	10
3	Goods credits, original	11
4	Goods debits, original	12
5	Goods credits, seasonally adjusted	13
6	Goods debits, seasonally adjusted	14
7	Goods credits, trend estimates	15
8	Goods debits, trend estimates	16
9	Services, summary, original	17
10	Services, summary, seasonally adjusted and trend estimates	18
11	Services, original, quarterly	19

INTERNATIONAL MERCHANDISE TRADE – RECORDED TRADE BASIS

12	International merchandise exports, by commodity	20
13	International merchandise imports, by commodity	23
14	International merchandise trade, by country and country groups	26
15	International merchandise trade, by state	27

OTHER TABLES

16	Period average exchange rates per Australian dollar	28
-----------	---	----

OTHER INFORMATION

Explanatory Notes	29
Appendix - Related articles	33

TIME SERIES DATA

TIME SERIES DATA

Data available free on the ABS web site <<http://www.abs.gov.au>> include longer time series of tables in this publication and additional spreadsheets and data cubes below:

31 Merchandise exports by Broad Economic Category (BEC)

32 Merchandise exports by industry of origin (ANZSIC)

33 Merchandise imports by Broad Economic Category (BEC)

34 Merchandise imports by Balance of Payments Broad Economic Category (BoPBEC)

35 Merchandise imports by industry of origin (ANZSIC)

36 Merchandise exports, state by country and country groups

37 Merchandise imports, state by country and country groups

91 Monthly seasonal adjustment factors and forward factors for 12 months.

Trade in Services data cubes are usually updated on an annual basis - with the March issue of 5368.0 for calendar year and with the September issue for financial year.

Financial year (cat. no. 5368.0.55.003)

1 International trade in services, credits, state by financial year

2 International trade in services, credits, financial year by state

3 International trade in services, debits, state by financial year

4 International trade in services, debits, financial year by state

5 International trade in services, credits, financial year by country and service

6 International trade in services, credits, service by financial year and by country

7 International trade in services, debits, financial year by country and service

8 International trade in services, debits, service by financial year and by country

9 International trade in services, financial year by detailed service

Calendar year (cat. no. 5368.0.55.004)

1 International trade in services, credits, state by calendar year

2 International trade in services, credits, calendar year by state

3 International trade in services, debits, state by calendar year

4 International trade in services, debits, calendar year by state

5 International trade in services, credits, calendar year by country and service

6 International trade in services, credits, service by calendar year and by country

7 International trade in services, debits, calendar year by country and service

8 International trade in services, debits, service by calendar year and by country

9 International trade in services, calendar year by detailed service

ANALYSIS AND COMMENTS

BALANCE ON GOODS AND SERVICES

The trend estimate of the balance on goods and services in February 2008 was a deficit of \$2,723m, an increase of \$141m (5%) on the revised deficit in January 2008.

In seasonally adjusted terms, the balance on goods and services in February 2008 was a deficit of \$3,289m, an increase of \$754m (30%) on the revised deficit in January 2008.

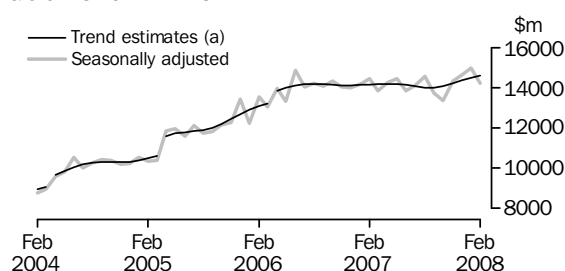
EXPORTS OF GOODS AND SERVICES

The trend estimate of goods and services credits rose \$91m between January and February to \$18,663m.

In seasonally adjusted terms, goods and services credits fell \$790m (4%) to \$18,260m. Non-rural goods fell \$765m (7%) and other goods fell \$8m (1%) while rural goods rose \$23m (1%). Services credits fell \$40m (1%).

Exports of goods

GOODS CREDITS



(a) Trend breaks of \$430m to April 2004, \$819m to April 2005 and \$500m to April 2006 have been applied.

RURAL GOODS

The trend estimate of rural goods exports rose \$44m (2%) to \$2,150m.

In seasonally adjusted terms, exports of rural goods rose \$23m (1%) to \$2,157m.

The seasonally adjusted series for cereal grains and cereal preparations was up \$70m (18%) for the month.

Partly offsetting this rise were:

- meat and meat preparations, down \$21m (4%)
- wool and sheepskins, down \$20m (8%).

In original terms, exports of rural goods rose \$337m (18%) to \$2,169m.

NON-RURAL GOODS

The trend estimate of non-rural goods exports rose \$10m to \$11,142m.

In seasonally adjusted terms, exports of non-rural goods fell \$765m (7%) to \$10,721m.

Components falling in seasonally adjusted terms were:

- metal ores and minerals, down \$624m (18%)
- coal, coke and briquettes, down \$281m (16%)
- other manufactures, down \$194m (13%).

Partly offsetting these were:

- metals (excluding non-monetary gold), up \$234m (26%)
- other non-rural (including sugar and beverages), up \$66m (7%).

ANALYSIS AND COMMENTS *continued*

Exports of goods *continued*

NON-RURAL GOODS *continued*

In original terms, exports of non-rural goods fell \$108m (1%) to \$10,092m.

The main movements in the original series contributing to seasonally adjusted series were:

- metal ores and minerals, down \$481m (15%), in contrast to an average January to February rise of 11% over the previous three years, with:
 - non-agglomerated iron ore, down \$458m (27%) with volumes down 25% and prices down 2%
 - alumina, down \$84m (19%) with volumes down 18% and prices down 1%
 - uranium, down \$43m (55%) with volumes down 7% and prices down 52%.
- coal, coke and briquettes, down \$384m (21%), compared to an average January to February fall of 14% over the previous three years, with:
 - metallurgical coal, down \$282m (26%) with volumes down 29% and prices up 3%
 - non-metallurgical coal, down \$122m (17%) with volumes down 19% and prices up 2%.

OTHER GOODS

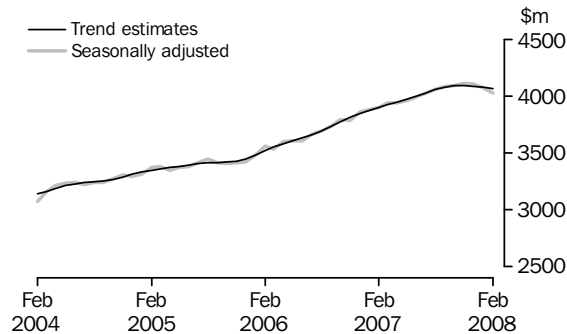
The trend estimate of other goods exports rose \$48m (4%) to \$1,303m.

In seasonally adjusted terms, exports of other goods fell \$8m (1%) to \$1,353m with non-monetary gold, down \$18m (2%).

In original terms, exports of other goods fell \$7m (1%) to \$1,350m.

Exports of Services

SERVICES CREDITS



In trend terms, services credits fell \$12m to \$4,068m.

In seasonally adjusted terms, services credits fell by \$40m (1%) to \$4,029m.

The components contributing to the fall in the seasonally adjusted estimates were:

- travel services, down \$39m (2%)
- transportation services, down \$8m (1%).

Partly offsetting these effects was the other services component, up \$7m (1%).

In seasonally adjusted terms, tourism related services credits fell \$47m (2%) to \$2,501m. This series is seasonally adjusted independently to the series that comprise services credits.

ANALYSIS AND COMMENTS *continued*

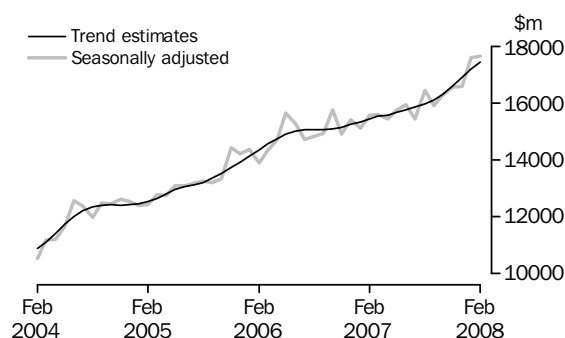
IMPORTS OF GOODS AND SERVICES

The trend estimate of goods and services debits rose \$231m (1%) between January and February to \$21,386m.

In seasonally adjusted terms, goods and services debits fell \$37m to \$21,548m. Consumption goods fell \$93m (2%), intermediate and other merchandise goods fell \$72m (1%) and other goods fell \$53m (6%) while capital goods rose \$269m (7%). Services debits fell \$89m (2%).

Imports of goods

GOODS DEBITS



CONSUMPTION GOODS

The trend estimate of imports of consumption goods rose \$53m (1%) to \$5,121m.

In seasonally adjusted terms, imports of consumption goods fell \$93m (2%) to \$5,082m.

The main components contributing to the fall in the seasonally adjusted estimates were:

- non-industrial transport equipment, down \$116m (7%)
- toys, books and leisure, down \$32m (8%).

Partly offsetting these were:

- textile, clothing and footwear, up \$17m (3%)
- consumption goods n.e.s., up \$14m (1%).

In original terms, imports of consumption goods fell \$26m (1%) to \$4,831m.

CAPITAL GOODS

The trend estimate of imports of capital goods rose \$43m (1%) to \$3,865m.

In seasonally adjusted terms, imports of capital goods rose \$269m (7%) to \$4,002m.

The main component contributing to the rise in the seasonally adjusted estimates was civil aircraft, up \$404m.

Partly offsetting this were:

- machinery and industrial equipment, down \$108m (7%)
- ADP equipment, down \$42m (7%).

In original terms, imports of capital goods rose \$155m (4%) to \$3,639m.

ANALYSIS AND COMMENTS *continued*

Imports of goods continued

INTERMEDIATE AND OTHER MERCHANDISE GOODS

The trend estimate of imports of intermediate and other merchandise goods rose \$109m (1%) to \$7,655m.

In seasonally adjusted terms, imports of intermediate and other merchandise goods fell \$72m (1%) to \$7,708m.

The main components falling in the seasonally adjusted estimates were:

- processed industrial supplies n.e.s., down \$108m (6%)
- fuels and lubricants, down \$78m (3%)
- iron and steel, down \$39m (13%)
- organic and inorganic chemicals, down \$35m (8%).

Partly offsetting these were:

- other parts for capital goods, up \$96m (10%)
- other merchandise goods, up \$73m (53%).

In original terms, imports of intermediate and other merchandise goods fell \$228m (3%) to \$7,599m.

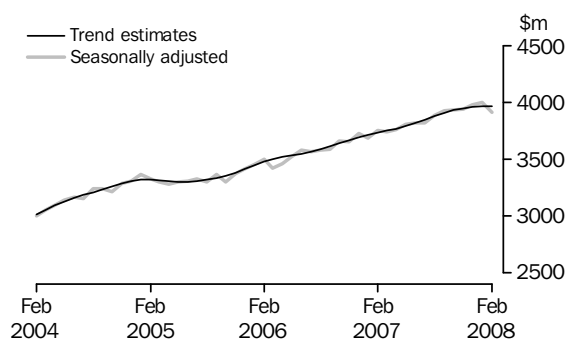
OTHER GOODS

The trend estimate of imports of other goods rose \$29m (4%) to \$783m.

In both original and seasonally adjusted terms, other goods debits fell \$53m (6%) to \$846m driven by non-monetary gold, down \$74m (10%).

Imports of services

SERVICES DEBITS



In trend terms, services debits fell \$1m to \$3,963m.

In seasonally adjusted terms, services debits fell \$89m (2%) to \$3,910m.

Components contributing to the fall in the seasonally adjusted estimates were:

- transportation services, down \$54m (4%)
- travel services, down \$42m (3%).

Partly offsetting this effect was other services, up \$8m (1%).

In seasonally adjusted terms, tourism related services debits fell \$78m (4%) to \$1,983m. This series is seasonally adjusted independently to the series that comprise services debits.

GOODS AND SERVICES(a), Summary: Seasonally Adjusted and Trend Estimates

Months	BALANCE	CREDITS					DEBITS					
	On goods and services	Total goods and services	Total goods	Rural goods(b)	Non-rural and other goods(b)	Total services	Total goods and services	Total goods	Consumption goods	Capital goods	Intermediate and other goods	Total services
	\$m	\$m	\$m	\$m	\$m	\$m	\$m	\$m	\$m	\$m	\$m	\$m
SEASONALLY ADJUSTED												
2006												
December	-1 280	17 861	14 003	2 076	11 927	3 858	-19 140	-15 417	-4 594	-3 668	-7 155	-3 723
2007												
January	-754	18 046	14 169	2 012	12 157	3 877	-18 800	-15 113	-4 617	-3 443	-7 054	-3 687
February	-984	18 345	14 446	2 072	12 374	3 898	-19 329	-15 576	-4 821	-3 544	-7 211	-3 753
March	-1 578	17 769	13 832	2 032	11 800	3 937	-19 347	-15 607	-4 625	-3 462	-7 519	-3 740
April	-1 030	18 178	14 240	1 971	12 269	3 938	-19 208	-15 447	-4 707	-3 340	-7 400	-3 761
May	-1 120	18 424	14 462	1 948	12 514	3 962	-19 544	-15 741	-4 587	-3 709	-7 445	-3 803
June	-1 905	17 845	13 854	1 864	11 990	3 992	-19 750	-15 932	-4 595	-3 554	-7 782	-3 818
July	-1 131	18 117	14 091	1 947	12 144	4 026	-19 249	-15 426	-4 593	-3 265	-7 568	-3 822
August	-1 717	18 613	14 558	1 876	12 682	4 055	-20 329	-16 443	-4 740	-3 698	-8 005	-3 886
September	-1 999	17 830	13 744	1 994	11 750	4 086	-19 829	-15 905	-4 784	-3 675	-7 446	-3 924
October	-2 772	17 439	13 348	1 888	11 460	4 091	-20 210	-16 280	-4 748	-3 483	-8 049	-3 931
November	-2 054	18 430	14 317	1 956	12 360	4 113	-20 484	-16 545	-4 923	-3 683	-7 939	-3 939
December	-1 792	18 756	14 647	2 129	12 518	4 108	-20 548	-16 571	-5 000	-3 819	-7 752	-3 977
2008												
January	-2 535	19 050	14 981	2 134	12 847	4 069	-21 585	-17 587	-5 175	-3 733	-8 679	-3 999
February	-3 289	18 260	14 231	2 157	12 073	4 029	-21 548	-17 638	-5 082	-4 002	-8 554	-3 910
TREND ESTIMATES												
2006												
December	-971	17 963	14 119	2 126	11 993	3 845	-18 934	-15 243	-4 645	-3 490	-7 109	-3 691
2007												
January	-1 027	18 022	14 147	2 078	12 069	3 874	-19 048	-15 334	-4 672	-3 507	-7 155	-3 714
February	-1 100	18 056	14 156	2 037	12 119	3 901	-19 156	-15 423	-4 679	-3 506	-7 238	-3 733
March	-1 187	18 094	14 170	1 999	12 171	3 924	-19 281	-15 531	-4 669	-3 498	-7 364	-3 750
April	-1 195	18 142	14 195	1 968	12 227	3 947	-19 336	-15 567	-4 652	-3 494	-7 422	-3 769
May	-1 298	18 167	14 197	1 943	12 254	3 971	-19 466	-15 674	-4 635	-3 499	-7 540	-3 792
June	-1 440	18 144	14 147	1 921	12 226	3 997	-19 584	-15 766	-4 628	-3 509	-7 629	-3 818
July	-1 619	18 087	14 061	1 905	12 155	4 026	-19 706	-15 859	-4 640	-3 529	-7 689	-3 847
August	-1 787	18 052	13 996	1 906	12 091	4 056	-19 838	-15 960	-4 683	-3 550	-7 728	-3 878
September	-1 949	18 072	13 993	1 927	12 066	4 079	-20 021	-16 113	-4 752	-3 582	-7 780	-3 908
October	-2 099	18 158	14 067	1 965	12 102	4 091	-20 257	-16 326	-4 834	-3 627	-7 865	-3 932
November	-2 245	18 298	14 205	2 011	12 194	4 094	-20 544	-16 595	-4 918	-3 690	-7 987	-3 949
December	-2 405	18 446	14 357	2 060	12 297	4 089	-20 851	-16 892	-4 997	-3 756	-8 139	-3 959
2008												
January	-2 582	18 572	14 493	2 106	12 386	4 080	-21 155	-17 190	-5 068	-3 822	-8 300	-3 964
February	-2 723	18 663	14 595	2 150	12 445	4 068	-21 386	-17 423	-5 121	-3 865	-8 437	-3 963

(a) For sign conventions, see paragraph 11 of the Explanatory Notes.

(b) For all time periods, estimates for sugar, sugar preparations and honey are included in Non-rural and other goods.

GOODS AND SERVICES (a), Summary: Original

	BALANCE	CREDITS					DEBITS					
	<i>On goods and services</i>	<i>Total goods and services</i>	<i>Total goods</i>	<i>Rural goods (b)</i>	<i>Non-rural and other goods (b)</i>	<i>Total services</i>	<i>Total goods and services</i>	<i>Total goods</i>	<i>Consumption goods</i>	<i>Capital goods</i>	<i>Intermediate and other goods</i>	<i>Total services</i>
	\$m	\$m	\$m	\$m	\$m	\$m	\$m	\$m	\$m	\$m	\$m	\$m
FINANCIAL YEAR												
2004-05	-22 626	167 562	127 867	25 687	102 180	39 695	-190 188	-150 873	-47 143	-35 967	-67 763	-39 315
2005-06	-14 520	196 274	154 425	25 312	129 113	41 849	-210 794	-169 716	-50 322	-39 996	-79 398	-41 078
2006-07	-12 214	215 601	169 535	25 135	144 400	46 066	-227 815	-183 500	-54 998	-41 172	-87 330	-44 315
MONTHS												
2006												
December	-89	18 687	14 799	2 201	12 598	3 888	-18 776	-14 816	-4 351	-3 658	-6 807	-3 960
2007												
January	-2 057	16 532	12 723	1 651	11 072	3 809	-18 589	-14 717	-4 371	-3 229	-7 117	-3 872
February	-266	17 295	13 351	1 978	11 373	3 944	-17 561	-14 281	-4 387	-3 026	-6 868	-3 280
March	-1 054	18 109	14 035	2 155	11 880	4 074	-19 163	-15 539	-4 413	-3 449	-7 677	-3 624
April	-496	17 973	13 976	1 928	12 048	3 997	-18 469	-14 818	-4 329	-3 223	-7 266	-3 651
May	-852	18 611	14 830	2 084	12 746	3 781	-19 463	-15 845	-4 415	-3 822	-7 608	-3 618
June	-1 916	17 665	13 988	1 916	12 072	3 677	-19 581	-15 700	-4 344	-3 746	-7 610	-3 881
July	-899	18 502	14 420	1 897	12 523	4 082	-19 401	-15 473	-4 643	-3 255	-7 575	-3 928
August	-2 000	18 954	14 806	1 866	12 940	4 148	-20 954	-17 100	-5 065	-3 780	-8 255	-3 854
September	-2 230	17 776	13 817	2 007	11 810	3 959	-20 006	-15 808	-4 953	-3 581	-7 274	-4 198
October	-3 772	18 062	13 824	1 949	11 875	4 238	-21 834	-17 715	-5 559	-3 696	-8 460	-4 119
November	-3 128	18 359	14 159	1 964	12 195	4 200	-21 487	-17 651	-5 503	-4 067	-8 081	-3 836
December	-299	19 774	15 641	2 250	13 391	4 133	-20 073	-15 880	-4 750	-3 778	-7 352	-4 193
2008												
January	-3 913	17 380	13 389	1 832	11 557	3 991	-21 293	-17 067	-4 857	-3 484	-8 726	-4 226
February	-2 665	17 782	13 611	2 169	11 442	4 171	-20 447	-16 915	-4 831	-3 639	-8 445	-3 532
FINANCIAL YEAR TO DATE												
8 months ended February												
2007	-7 896	143 243	112 706	17 052	95 654	30 537	-151 139	-121 598	-37 497	-26 932	-57 169	-29 541
2008	-18 906	146 589	113 667	15 934	97 733	32 922	-165 495	-133 609	-40 161	-29 280	-64 168	-31 886

(a) For sign conventions, see paragraph 11 of the Explanatory Notes.

(b) For all time periods, estimates for sugar, sugar preparations and honey are included in Non-rural and other goods.

							8 MONTHS		Change
							ENDED FEBRUARY		
	2004-05	2005-06	2006-07	Dec 2007	Jan 2008	Feb 2008	2007	2008	
	\$m	\$m	\$m	\$m	\$m	\$m	\$m	%	
Total goods credits	127 867	154 425	169 535	15 641	13 389	13 611	112 706	113 667	0.9
<i>Rural goods</i>	25 687	25 312	25 135	2 250	1 832	2 169	17 052	15 934	-6.6
Meat and meat preparations	6 937	6 709	7 078	619	341	470	4 817	4 183	-13.2
Cereal grains and cereal preparations	5 159	4 852	4 171	327	434	542	3 074	2 612	-15.0
Wool and sheepskins	2 838	2 544	3 065	321	179	248	1 862	1 851	-0.6
Other rural(a)	10 753	11 207	10 821	983	878	909	7 299	7 288	-0.2
<i>Non-rural goods</i>	94 328	118 164	131 775	12 332	10 200	10 092	87 580	88 254	0.8
Metal ores and minerals	19 854	28 936	35 314	3 697	3 154	2 673	23 684	24 758	4.5
Coal, coke and briquettes	17 236	24 353	21 928	1 860	1 799	1 415	14 887	13 430	-9.8
Other mineral fuels	11 151	13 220	15 642	1 557	1 540	1 521	10 675	11 775	10.3
Metals (excl. non-monetary gold)	8 668	11 278	14 825	1 400	844	1 064	9 592	9 032	-5.8
Machinery	7 488	8 087	8 437	803	547	724	5 479	5 883	7.4
Transport equipment	4 943	5 316	4 646	529	276	512	2 973	3 701	24.5
Other manufactures	14 043	14 926	16 193	1 408	1 152	1 246	10 644	11 109	4.4
Other non-rural (incl. sugar and beverages)	10 945	12 048	14 790	1 078	888	937	9 646	8 566	-11.2
<i>Other goods</i>	7 852	10 949	12 625	1 059	1 357	1 350	8 074	9 479	17.4
Goods for processing	241	368	417	30	25	28	249	182	-26.9
Repairs on goods	67	74	90	7	6	11	52	65	25.0
Goods procured in ports by carriers	1 072	1 420	1 379	137	130	133	929	989	6.5
Non-monetary gold	6 472	9 087	10 739	885	1 196	1 178	6 844	8 243	20.4

(a) For all time periods, estimates for sugar, sugar preparations and honey are included in Other non-rural.

GOODS DEBITS(a): Original

							8 MONTHS		Change
							ENDED FEBRUARY		
	2004-05	2005-06	2006-07	Dec 2007	Jan 2008	Feb 2008	2007	2008	
	\$m	\$m	\$m	\$m	\$m	\$m	\$m	%	
Total goods debits	-150 873	-169 716	-183 500	-15 880	-17 067	-16 915	-121 598	-133 609	9.9
<i>Consumption goods</i>	-47 143	-50 322	-54 998	-4 750	-4 857	-4 831	-37 497	-40 161	7.1
Food and beverages, mainly for consumption	-5 767	-6 170	-7 181	-653	-669	-643	-4 958	-5 335	7.6
Household electrical items	-4 024	-4 291	-4 610	-393	-350	-386	-3 224	-3 618	12.2
Non-industrial transport equipment	-13 003	-13 589	-14 889	-1 469	-1 407	-1 320	-9 804	-10 898	11.2
Textiles, clothing and footwear	-5 811	-6 365	-6 805	-501	-668	-729	-4 808	-4 967	3.3
Toys, books and leisure goods	-3 740	-4 055	-4 330	-340	-339	-316	-2 981	-3 137	5.2
Consumption goods n.e.s.	-14 798	-15 852	-17 183	-1 394	-1 424	-1 437	-11 722	-12 206	4.1
<i>Capital goods</i>	-35 967	-39 996	-41 172	-3 778	-3 484	-3 639	-26 932	-29 280	8.7
Machinery and industrial equipment	-13 409	-14 328	-15 306	-1 313	-1 446	-1 240	-10 405	-10 855	4.3
ADP equipment	-5 761	-6 073	-6 847	-611	-543	-468	-4 344	-4 434	2.1
Telecommunications equipment	-4 568	-5 334	-5 333	-468	-372	-404	-3 482	-3 941	13.2
Civil aircraft	-2 496	-2 967	-1 667	-307	-49	-453	-945	-1 365	44.4
Industrial transport equipment n.e.s.	-4 981	-5 495	-6 431	-592	-634	-588	-4 027	-4 768	18.4
Capital goods n.e.s.	-4 752	-5 799	-5 588	-487	-440	-486	-3 729	-3 917	5.0
<i>Intermediate and other merchandise goods</i>	-63 730	-72 722	-79 908	-6 864	-7 827	-7 599	-52 235	-58 069	11.2
Food and beverages, mainly for industry	-659	-651	-819	-68	-86	-82	-542	-619	14.2
Primary industrial supplies n.e.s.	-1 052	-1 193	-1 555	-126	-138	-94	-1 008	-993	-1.5
Fuels and lubricants	-14 720	-21 014	-21 470	-2 340	-2 648	-2 570	-13 714	-18 077	31.8
Parts for transport equipment	-7 008	-7 314	-8 355	-657	-701	-743	-5 535	-5 834	5.4
Parts for ADP equipment	-1 787	-1 857	-1 620	-94	-88	-78	-1 154	-750	-35.0
Other parts for capital goods	-9 485	-10 154	-11 762	-921	-925	-984	-7 706	-7 913	2.7
Organic and inorganic chemicals	-3 622	-4 134	-4 406	-293	-455	-432	-2 968	-3 082	3.8
Paper and paperboard	-2 313	-2 302	-2 372	-163	-182	-189	-1 610	-1 609	-0.1
Textile yarn and fabrics	-1 452	-1 361	-1 365	-100	-116	-104	-926	-911	-1.6
Iron and steel	-3 008	-3 239	-3 817	-228	-323	-279	-2 465	-2 340	-5.1
Plastics	-2 428	-2 517	-2 957	-239	-254	-234	-1 968	-2 054	4.4
Processed industrial supplies n.e.s.	-15 142	-15 856	-17 791	-1 528	-1 773	-1 599	-11 672	-12 893	10.5
Other merchandise goods	-1 054	-1 130	-1 619	-107	-138	-211	-967	-994	2.8
<i>Other goods</i>	-4 033	-6 676	-7 422	-488	-899	-846	-4 934	-6 099	23.6
Goods for processing	-243	-445	-507	-1	-11	-32	-388	-68	-82.5
Repairs on goods	-182	-115	-131	-8	-5	-5	-92	-77	-16.3
Goods procured in ports by carriers	-1 049	-1 406	-1 468	-137	-131	-131	-1 012	-1 032	2.0
Non-monetary gold	-2 559	-4 710	-5 316	-342	-752	-678	-3 442	-4 922	43.0

(a) For sign conventions, see paragraph 11 of the Explanatory Notes.

GOODS CREDITS: Seasonally Adjusted

	May 2007	Jun 2007	Jul 2007	Aug 2007	Sep 2007	Oct 2007	Nov 2007	Dec 2007	Jan 2008	Feb 2008
	\$m	\$m	\$m	\$m	\$m	\$m	\$m	\$m	\$m	\$m
Total goods credits	14 462	13 854	14 091	14 558	13 744	13 348	14 317	14 647	14 981	14 231
<i>Rural goods</i>	1 948	1 864	1 947	1 876	1 994	1 888	1 956	2 129	2 134	2 157
Meat and meat preparations	527	510	526	537	542	503	560	571	519	498
Cereal grains and cereal preparations	281	229	375	228	329	250	223	338	380	450
Wool and sheepskins	268	267	222	220	227	240	264	276	266	246
Other rural(a)	871	858	823	891	896	895	910	944	969	963
<i>Non-rural goods</i>	11 303	10 697	10 983	11 426	10 811	10 362	11 112	11 454	11 486	10 721
Metal ores and minerals	3 064	2 947	3 111	3 184	3 204	2 586	3 194	3 154	3 461	2 837
Coal, coke and briquettes(b)	1 760	1 667	1 558	1 733	1 779	1 602	1 643	1 826	1 766	1 485
Other mineral fuels	1 266	1 332	1 145	1 581	1 030	1 558	1 499	1 475	1 592	1 597
Metals (excl. non-monetary gold)	1 355	1 045	1 290	1 193	1 213	987	1 134	1 340	905	1 139
Machinery	725	718	721	714	768	736	731	726	761	772
Transport equipment	434	375	479	442	456	458	476	472	511	530
Other manufactures	1 389	1 366	1 415	1 438	1 417	1 390	1 363	1 368	1 477	1 283
Other non-rural (incl. sugar and beverages)	1 308	1 247	1 262	1 140	945	1 043	1 073	1 090	1 013	1 079
<i>Other goods</i>	1 211	1 292	1 161	1 256	940	1 098	1 249	1 064	1 361	1 353
Goods for processing(c)	55	43	23	19	13	19	25	30	25	28
Repairs on goods(c)	9	12	8	8	9	8	8	7	6	11
Goods procured in ports by carriers	110	112	115	112	108	112	133	142	134	136
Non-monetary gold(c)	1 037	1 125	1 015	1 117	810	959	1 083	885	1 196	1 178

(a) For all time periods, estimates for sugar, sugar preparations and honey are included in Other non-rural.

(b) Only a length-of-month effect has been applied to this component.

(c) This component is not seasonally adjusted.

GOODS DEBITS(a): Seasonally Adjusted

	May 2007	Jun 2007	Jul 2007	Aug 2007	Sep 2007	Oct 2007	Nov 2007	Dec 2007	Jan 2008	Feb 2008
	\$m	\$m	\$m	\$m	\$m	\$m	\$m	\$m	\$m	\$m
Total goods debits	-15 741	-15 932	-15 426	-16 443	-15 905	-16 280	-16 545	-16 571	-17 587	-17 638
<i>Consumption goods</i>	-4 587	-4 595	-4 593	-4 740	-4 784	-4 748	-4 923	-5 000	-5 175	-5 082
Food and beverages, mainly for consumption	-599	-563	-627	-669	-649	-589	-636	-624	-663	-676
Household electrical items	-397	-410	-421	-418	-443	-423	-432	-416	-435	-445
Non-industrial transport equipment	-1 157	-1 175	-1 176	-1 282	-1 298	-1 356	-1 427	-1 452	-1 564	-1 448
Textiles, clothing and footwear	-570	-579	-567	-574	-579	-573	-581	-597	-590	-607
Toys, books and leisure goods	-371	-371	-344	-358	-369	-353	-381	-398	-417	-385
Consumption goods n.e.s.	-1 492	-1 497	-1 457	-1 439	-1 446	-1 454	-1 467	-1 513	-1 506	-1 520
<i>Capital goods</i>	-3 709	-3 554	-3 265	-3 698	-3 675	-3 483	-3 683	-3 819	-3 733	-4 002
Machinery and industrial equipment	-1 220	-1 254	-1 269	-1 267	-1 466	-1 177	-1 335	-1 304	-1 441	-1 333
ADP equipment	-563	-555	-553	-601	-568	-540	-589	-615	-614	-572
Telecommunications equipment	-470	-468	-443	-464	-487	-590	-542	-464	-476	-489
Civil aircraft(b)	-414	-259	-10	-296	-71	-115	-64	-307	-49	-453
Industrial transport equipment n.e.s.	-575	-557	-533	-604	-589	-581	-658	-625	-661	-635
Capital goods n.e.s.	-468	-461	-457	-466	-493	-481	-496	-504	-493	-519
<i>Intermediate and other merchandise goods</i>	-6 897	-6 929	-6 726	-7 119	-6 884	-7 263	-7 149	-7 264	-7 780	-7 708
Food and beverages, mainly for industry	-70	-71	-69	-72	-66	-93	-73	-77	-82	-85
Primary industrial supplies n.e.s.(c)	-95	-123	-149	-107	-115	-148	-110	-125	-135	-114
Fuels and lubricants(b)	-2 072	-2 025	-1 813	-2 166	-2 018	-2 289	-2 233	-2 340	-2 648	-2 570
Parts for transport equipment	-682	-697	-688	-760	-701	-694	-733	-722	-745	-775
Parts for ADP equipment	-116	-104	-100	-104	-99	-91	-92	-95	-93	-88
Other parts for capital goods	-1 021	-980	-978	-983	-975	-986	-964	-975	-955	-1 051
Organic and inorganic chemicals(c)	-340	-320	-402	-400	-440	-381	-368	-316	-413	-378
Paper and paperboard	-213	-188	-212	-208	-195	-193	-183	-192	-179	-194
Textile yarn and fabrics	-107	-109	-107	-108	-117	-113	-113	-119	-113	-112
Iron and steel	-298	-332	-334	-300	-293	-284	-288	-268	-303	-264
Plastics	-260	-252	-251	-256	-261	-256	-257	-250	-244	-243
Processed industrial supplies n.e.s.	-1 515	-1 547	-1 536	-1 538	-1 508	-1 610	-1 623	-1 677	-1 731	-1 623
Other merchandise goods(b)	-108	-182	-87	-119	-96	-125	-111	-107	-138	-211
<i>Other goods</i>	-548	-853	-842	-886	-562	-786	-790	-488	-899	-846
Goods for processing(b)	-1	-5	-1	-7	-1	-1	-14	-1	-11	-32
Repairs on goods(b)	-10	-10	-14	-17	-9	-10	-9	-8	-5	-5
Goods procured in ports by carriers(b)	-116	-115	-119	-119	-119	-138	-138	-137	-131	-131
Non-monetary gold(d)	-421	-723	-708	-743	-433	-637	-629	-342	-752	-678

(a) For sign conventions, see paragraph 11 of the Explanatory Notes.

(b) These components are not seasonally adjusted.

(c) In using these seasonally adjusted series, care should be exercised because of the difficulties associated with reliably estimating the seasonal pattern.

(d) From October 1995, this component is not seasonally adjusted.

	May 2007	Jun 2007	Jul 2007	Aug 2007	Sep 2007	Oct 2007	Nov 2007	Dec 2007	Jan 2008	Feb 2008
	\$m	\$m	\$m	\$m	\$m	\$m	\$m	\$m	\$m	\$m
Total goods credits	14 197	14 147	14 061	13 996	13 993	14 067	14 205	14 357	14 493	14 595
<i>Rural goods</i>	1 943	1 921	1 905	1 906	1 927	1 965	2 011	2 060	2 106	2 150
Meat and meat preparations	540	526	522	526	533	538	539	536	531	524
Cereal grains and cereal preparations	278	284	283	277	274	280	298	326	357	396
Wool and sheepskins	261	249	238	233	236	243	252	259	264	266
Other rural(a)	863	862	863	869	884	903	921	938	954	964
<i>Non-rural goods</i>	11 087	11 043	10 979	10 939	10 937	10 976	11 039	11 095	11 132	11 142
Metal ores and minerals	3 000	3 042	3 057	3 059	3 059	3 066	3 085	3 105	3 117	3 121
Coal, coke and briquettes	1 725	1 694	1 674	1 674	1 685	1 699	1 704	1 695	1 679	1 648
Other mineral fuels	1 306	1 299	1 300	1 316	1 355	1 408	1 464	1 516	1 563	1 588
Metals (excl. non-monetary gold)	1 268	1 232	1 201	1 177	1 158	1 144	1 131	1 116	1 100	1 094
Machinery	724	727	729	731	733	737	741	746	751	757
Transport equipment	409	424	436	446	456	465	476	488	500	514
Other manufactures	1 379	1 387	1 394	1 404	1 409	1 404	1 394	1 384	1 372	1 361
Other non-rural (incl. sugar and beverages)	1 274	1 239	1 187	1 132	1 084	1 054	1 044	1 045	1 048	1 059
<i>Other goods</i>	1 167	1 183	1 177	1 152	1 129	1 126	1 155	1 202	1 255	1 303
Goods for processing	37	33	28	23	21	20	22	25	27	29
Repairs on goods	9	9	9	9	8	8	8	8	8	8
Goods procured in ports by carriers	112	111	111	112	115	120	126	132	136	140
Non-monetary gold	1 008	1 029	1 029	1 008	984	977	999	1 038	1 083	1 126

(a) For all time periods, estimates for sugar, sugar preparations and honey are included in Other non-rural.

GOODS DEBITS(a): Trend Estimates

	May 2007	Jun 2007	Jul 2007	Aug 2007	Sep 2007	Oct 2007	Nov 2007	Dec 2007	Jan 2008	Feb 2008
	\$m	\$m	\$m	\$m	\$m	\$m	\$m	\$m	\$m	\$m
Total goods debits	-15 674	-15 766	-15 859	-15 960	-16 113	-16 326	-16 595	-16 892	-17 190	-17 423
<i>Consumption goods</i>	-4 635	-4 628	-4 640	-4 683	-4 752	-4 834	-4 918	-4 997	-5 068	-5 121
Food and beverages, mainly for consumption	-608	-610	-616	-623	-629	-632	-635	-640	-648	-655
Household electrical items	-390	-403	-415	-424	-428	-429	-429	-431	-433	-435
Non-industrial transport equipment	-1 231	-1 216	-1 219	-1 249	-1 300	-1 361	-1 414	-1 456	-1 490	-1 510
Textiles, clothing and footwear	-569	-570	-572	-574	-576	-579	-584	-590	-595	-600
Toys, books and leisure goods	-369	-363	-359	-358	-362	-371	-381	-390	-397	-402
Consumption goods n.e.s.	-1 468	-1 464	-1 459	-1 456	-1 456	-1 462	-1 475	-1 491	-1 505	-1 518
<i>Capital goods</i>	-3 499	-3 509	-3 529	-3 550	-3 582	-3 627	-3 690	-3 756	-3 822	-3 865
Machinery and industrial equipment	-1 276	-1 274	-1 278	-1 287	-1 301	-1 315	-1 326	-1 338	-1 350	-1 361
ADP equipment	-573	-564	-561	-564	-571	-578	-585	-591	-595	-597
Telecommunications equipment	-443	-456	-473	-491	-505	-513	-514	-508	-499	-488
Civil aircraft	-174	-192	-191	-163	-135	-126	-148	-184	-227	-261
Industrial transport equipment n.e.s.	-571	-560	-561	-573	-591	-608	-623	-636	-645	-649
Capital goods n.e.s.	-461	-463	-466	-472	-479	-486	-493	-500	-505	-509
<i>Intermediate and other merchandise goods</i>	-6 869	-6 898	-6 919	-6 950	-7 022	-7 135	-7 268	-7 408	-7 546	-7 655
Food and beverages, mainly for industry	-69	-70	-71	-73	-74	-76	-78	-80	-82	-83
Primary industrial supplies n.e.s.	-130	-126	-123	-123	-124	-125	-125	-124	-124	-124
Fuels and lubricants	-1 909	-1 969	-2 015	-2 054	-2 114	-2 201	-2 304	-2 406	-2 500	-2 567
Parts for transport equipment	-702	-703	-705	-708	-713	-718	-724	-733	-743	-751
Parts for ADP equipment	-108	-106	-103	-100	-97	-95	-94	-93	-91	-90
Other parts for capital goods	-1 013	-998	-987	-979	-973	-973	-976	-981	-989	-998
Organic and inorganic chemicals	-362	-370	-380	-390	-393	-389	-380	-374	-369	-369
Paper and paperboard	-205	-205	-203	-201	-197	-193	-190	-188	-186	-186
Textile yarn and fabrics	-111	-110	-109	-110	-112	-114	-115	-115	-115	-115
Iron and steel	-328	-322	-314	-306	-298	-291	-285	-281	-278	-277
Plastics	-254	-254	-255	-256	-256	-256	-254	-251	-248	-245
Processed industrial supplies n.e.s.	-1 541	-1 536	-1 532	-1 541	-1 563	-1 593	-1 625	-1 653	-1 674	-1 689
Other merchandise goods	-138	-129	-119	-110	-107	-110	-118	-131	-148	-162
<i>Other goods</i>	-670	-731	-770	-778	-757	-730	-720	-731	-754	-783
Goods for processing	-5	-5	-5	-3	-3	-5	-7	-11	-15	-19
Repairs on goods	-11	-12	-12	-12	-12	-10	-9	-7	-6	-5
Goods procured in ports by carriers	-114	-116	-118	-122	-126	-130	-133	-135	-135	-135
Non-monetary gold	-541	-598	-634	-640	-616	-585	-571	-578	-598	-624

(a) For sign conventions, see paragraph 11 of the Explanatory Notes.

SERVICES (a)(b), Summary: Original

							8 MONTHS ENDED FEBRUARY		Change
	2004-05	2005-06	2006-07	Dec 2007	Jan 2008	Feb 2008	2007	2008	
	\$m	\$m	\$m	\$m	\$m	\$m	\$m	\$m	
Services credits	39 695	41 849	46 066	4 133	3 991	4 171	30 537	32 922	7.8
<i>Transportation services</i>	8 002	8 208	8 617	755	756	734	5 869	5 844	-0.4
Freight	704	608	609	56	52	52	418	426	1.9
Passenger and other	7 298	7 600	8 008	699	704	682	5 451	5 418	-0.6
<i>Travel services</i>	21 440	22 624	25 076	2 233	2 133	2 335	16 536	18 265	10.5
<i>Other services</i>	10 253	11 017	12 373	1 145	1 102	1 102	8 132	8 813	8.4
Services debits	-39 315	-41 078	-44 315	-4 193	-4 226	-3 532	-29 541	-31 886	7.9
<i>Transportation services</i>	-13 796	-14 508	-15 368	-1 413	-1 350	-1 248	-10 333	-10 713	3.7
Freight	-7 500	-7 776	-8 044	-707	-775	-709	-5 447	-5 743	5.4
Passenger and other	-6 296	-6 732	-7 324	-706	-575	-539	-4 886	-4 970	1.7
<i>Travel services</i>	-14 507	-15 090	-15 968	-1 603	-1 757	-1 159	-10 714	-12 041	12.4
<i>Other services</i>	-11 012	-11 480	-12 979	-1 177	-1 119	-1 125	-8 494	-9 132	7.5
Memorandum items:									
Tourism related service credits(c)	25 584	26 728	29 313	2 613	2 525	2 705	19 476	21 085	8.3
Tourism related service debits(c)	-20 287	-21 374	-22 844	-2 271	-2 289	-1 655	-15 305	-16 691	9.1

(a) For sign conventions, see paragraph 11 of the Explanatory Notes.
 (b) For more detailed trade in services components, see table 11.

(c) For a more detailed explanation of tourism related services, see paragraphs 18 and 19 of the Explanatory Notes.

	May 2007	Jun 2007	Jul 2007	Aug 2007	Sep 2007	Oct 2007	Nov 2007	Dec 2007	Jan 2008	Feb 2008
	\$m	\$m	\$m	\$m	\$m	\$m	\$m	\$m	\$m	\$m
SEASONALLY ADJUSTED										
Services credits	3 962	3 992	4 026	4 055	4 086	4 091	4 113	4 108	4 069	4 029
Transportation services	700	710	728	717	732	711	703	709	708	700
Freight	47	47	52	52	51	54	54	54	55	54
Passenger and other	653	663	675	666	681	657	649	655	653	646
Travel services	2 188	2 215	2 231	2 260	2 272	2 281	2 306	2 291	2 228	2 189
Other services(b)	1 073	1 067	1 068	1 078	1 082	1 099	1 104	1 108	1 133	1 140
Services debits	-3 803	-3 818	-3 822	-3 886	-3 924	-3 931	-3 939	-3 977	-3 999	-3 910
Transportation services	-1 269	-1 267	-1 269	-1 303	-1 323	-1 327	-1 317	-1 345	-1 384	-1 330
Freight	-665	-664	-667	-677	-697	-704	-689	-712	-758	-721
Passenger and other	-604	-603	-601	-626	-626	-623	-628	-633	-627	-610
Travel services	-1 390	-1 401	-1 416	-1 436	-1 451	-1 481	-1 492	-1 502	-1 486	-1 444
Other services(b)	-1 144	-1 150	-1 138	-1 147	-1 151	-1 123	-1 130	-1 130	-1 129	-1 137
Memorandum items:										
Tourism related service credits(c)	2 527	2 560	2 574	2 608	2 626	2 623	2 646	2 634	2 548	2 501
Tourism related service debits(c)	-1 951	-1 986	-1 969	-2 021	-2 038	-2 050	-2 090	-2 095	-2 061	-1 983

TREND ESTIMATES										
Services credits	3 971	3 997	4 026	4 056	4 079	4 091	4 094	4 089	4 080	4 068
Transportation services	717	716	717	718	718	716	712	708	704	702
Freight	48	49	50	51	52	53	54	54	54	55
Passenger and other	669	667	667	667	666	663	658	653	650	647
Travel services	2 191	2 211	2 235	2 258	2 275	2 281	2 277	2 266	2 250	2 232
Other services	1 062	1 069	1 075	1 079	1 085	1 094	1 105	1 116	1 126	1 134
Services debits	-3 792	-3 818	-3 847	-3 878	-3 908	-3 932	-3 949	-3 959	-3 964	-3 963
Transportation services	-1 271	-1 271	-1 279	-1 293	-1 310	-1 324	-1 335	-1 344	-1 351	-1 354
Freight	-667	-669	-672	-678	-687	-698	-708	-718	-726	-733
Passenger and other	-604	-602	-607	-615	-623	-626	-627	-626	-624	-621
Travel services	-1 383	-1 401	-1 420	-1 440	-1 458	-1 473	-1 481	-1 485	-1 484	-1 479
Other services	-1 138	-1 146	-1 148	-1 145	-1 139	-1 135	-1 132	-1 130	-1 130	-1 129
Memorandum items:										
Tourism related service credits(c)	2 540	2 558	2 581	2 605	2 622	2 626	2 616	2 599	2 576	2 552
Tourism related service debits(c)	-1 962	-1 975	-1 993	-2 015	-2 039	-2 057	-2 065	-2 064	-2 057	-2 045

(a) For sign conventions, see paragraph 11 of the Explanatory Notes.

(b) In using these seasonally adjusted series, care should be exercised because of the difficulties associated with reliably estimating the seasonal pattern.

(c) For a more detailed explanation of tourism related services, see paragraphs 18 and 19 of the Explanatory Notes.

	CREDITS				DEBITS			
	Mar Qtr	Jun Qtr	Sep Qtr	Dec Qtr	Mar Qtr	Jun Qtr	Sep Qtr	Dec Qtr
	2007	2007	2007	2007	2007	2007	2007	2007
	\$m	\$m	\$m	\$m	\$m	\$m	\$m	\$m
Services	11 827	11 455	12 189	12 571	-10 776	-11 150	-11 980	-12 148
Transportation services	2 280	1 989	2 167	2 187	-3 761	-3 709	-3 958	-4 157
Passenger(c)	2 139	1 845	2 013	2 019	-1 575	-1 604	-1 758	-1 678
Freight	141	144	154	168	-1 986	-1 916	-2 003	-2 256
Other(c)	np	np	np	np	-200	-189	-197	-223
Travel services	6 565	6 221	6 848	6 949	-3 797	-4 032	-4 635	-4 490
Business	635	619	674	644	-697	-664	-675	-633
Personal	5 930	5 602	6 174	6 305	-3 100	-3 368	-3 960	-3 857
Education-related	2 736	3 032	3 406	3 022	-172	-177	-260	-176
Other	3 194	2 570	2 768	3 283	-2 928	-3 191	-3 700	-3 681
Communication services(d)	190	168	169	186	-185	-214	-187	-183
Construction services	36	33	30	40	—	—	—	—
Insurance services	176	176	181	181	-225	-225	-233	-233
Financial services	251	251	259	259	-150	-150	-155	-155
Computer and information services	336	368	384	409	-341	-382	-343	-414
Royalties and license fees	216	244	184	189	-790	-826	-877	-878
Other business services	1 403	1 636	1 622	1 811	-984	-1 111	-1 132	-1 185
Merchanting and other trade-related	193	211	183	249	-52	-50	-57	-69
Operational leasing	10	13	14	10	-208	-199	-220	-203
Miscellaneous business, professional and technical	1 200	1 412	1 425	1 552	-724	-862	-855	-913
Legal, accounting, management consulting and public relations	214	269	302	291	-96	-174	-106	-107
Advertising, market research and public opinion polling	60	66	61	89	-40	-53	-34	-42
Research and development	118	133	146	164	-28	-25	-38	-35
Architectural, engineering and other technical services	335	374	353	394	-141	-147	-202	-170
Agriculture, mining and on-site processing	88	92	95	104	-56	-94	-83	-81
Services between affiliated enterprises n.i.e.	263	331	322	335	-204	-218	-222	-269
Other	122	147	146	175	-159	-151	-170	-209
Personal, cultural, and recreational services	158	152	131	159	-340	-261	-268	-240
Audiovisual and related services	51	43	33	54	-266	-236	-244	-205
Personal, cultural and recreational services	107	109	98	105	-74	-25	-24	-35
Government services n.i.e.	216	217	214	201	-203	-240	-192	-213
Memorandum items:								
Tourism related services(e)	7 783	7 117	7 850	8 005	-5 462	-5 710	-6 476	-6 271

— nil or rounded to zero (including null cells)

np not available for publication but included in totals where applicable, unless otherwise indicated

(a) For sign conventions, see paragraph 11 of the Explanatory Notes.

(b) For more information see paragraphs 15 and 16 of the Explanatory Notes.

(c) Passenger transportation credits include other transportation services credits.

(d) Communications services includes other services n.i.e.

(e) For a more detailed explanation of tourism related services, see paragraphs 18 and 19 of the Explanatory Notes.

				Per cent of total merchandise exports(b)	8 MONTHS ENDED FEBRUARY	
	Dec	Jan	Feb		2007	2008
	2007	2008	2008			
	\$m	\$m	\$m	%	\$m	\$m
MAJOR COMMODITIES						
011 Meat of bovine animals	418	194	298	2.2	3 325	2 753
041 Wheat	195	207	286	2.1	2 099	1 458
268 Wool and other animal hair	288	159	223	1.7	1 630	1 651
281 Iron ore and concentrates	1 710	1 717	1 253	9.3	10 424	11 633
285 Aluminium ore and concentrates	564	465	385	2.9	4 274	3 907
321 Coal, not agglomerated	1 845	1 780	1 378	10.2	14 835	13 312
333 Crude petroleum oils	701	832	718	5.3	5 208	5 947
334 Refined petroleum oils	329	286	291	2.2	1 967	2 324
343 Natural gas	513	445	509	3.8	3 637	3 570
684 Aluminium	493	304	471	3.5	4 068	3 592
781 Passenger motor vehicles	300	135	325	2.4	1 761	2 136
971 Gold, non-monetary	864	1 178	1 148	8.5	6 713	8 078

SECTION AND DIVISION OF THE SITC

0	Food and live animals					
00	Live animals other than fish, crustaceans, molluscs and aquatic invertebrates	68	75	86	0.6	630 624
01	Meat and meat preparations	619	341	470	3.5	4 818 4 184
02	Dairy products and birds' eggs	261	218	210	1.6	1 588 1 790
03	Fish (not marine mammals), crustaceans, molluscs and aquatic invertebrates, and preparations thereof	105	102	85	0.6	792 737
04	Cereals and cereal preparations	327	434	542	4.0	3 074 2 611
05	Vegetables and fruit	111	89	100	0.7	945 837
06	Sugars, sugar preparations and honey	13	16	18	0.1	184 154
07	Coffee, tea, cocoa, spices, and manufactures thereof	26	18	22	0.2	158 178
08	Feeding stuff for animals (excl. unmilled cereals)	77	51	75	0.6	540 507
09	Miscellaneous edible products and preparations	37	29	43	0.3	297 300
	<i>Total Food and live animals</i>	<i>1 643</i>	<i>1 373</i>	<i>1 651</i>	<i>12.2</i>	<i>13 026 11 921</i>
1	Beverages and tobacco					
11	Beverages	257	160	186	1.4	1 972 1 959
12	Tobacco and tobacco manufactures	11	10	5	—	95 90
	<i>Total Beverages and tobacco</i>	<i>268</i>	<i>170</i>	<i>191</i>	<i>1.4</i>	<i>2 067 2 049</i>
2	Crude materials, inedible, except fuels					
21	Hides, skins and furskins, raw	70	38	51	0.4	465 456
22	Oil seeds and oleaginous fruits	5	86	37	0.3	122 190
23	Crude rubber (incl. synthetic and reclaimed)	1	—	1	—	2 5
24	Cork and wood	110	91	107	0.8	790 835
25	Pulp and waste paper	27	23	23	0.2	116 170
26	Textile fibres and their wastes (not manufactured into yarn or fabric)	345	181	246	1.8	2 286 2 005
27	Crude fertilisers (excl. those of Division 56) and crude minerals (excl. coal, petroleum and precious stones)	46	50	37	0.3	362 351
28	Metalliferous ores and metal scrap	3 651	3 104	2 636	19.5	23 311 24 405
29	Crude animal and vegetable materials, n.e.s.	17	11	15	0.1	135 127
	<i>Total Crude materials, inedible, except fuels</i>	<i>4 273</i>	<i>3 583</i>	<i>3 154</i>	<i>23.4</i>	<i>27 590 28 545</i>
3	Mineral fuels, lubricants and related materials					
32	Coal, coke and briquettes	1 860	1 799	1 415	10.5	14 886 13 430
33	Petroleum, petroleum products and related materials	1 033	1 119	1 011	7.5	7 187 8 284
34	Gas, natural and manufactured	650	543	635	4.7	4 357 4 418
	<i>Total Mineral fuels, lubricants and related materials</i>	<i>3 543</i>	<i>3 461</i>	<i>3 061</i>	<i>22.7</i>	<i>26 430 26 132</i>

— nil or rounded to zero (including null cells)

(b) Per cent of total merchandise is calculated for the most recent month.

(a) Some SITC sections and divisions exclude commodities subject to a confidentiality restriction. These are included in Division 98. For more information see paragraph 17 of the Explanatory Notes.

	Dec 2007	Jan 2008	Feb 2008	Per cent of total merchandise exports(b)	8 MONTHS ENDED FEBRUARY	
					2007	2008
					\$m	\$m
SECTION AND DIVISION OF THE SITC						
4	Animal and vegetable oils, fats and waxes					
41	22	32	36	0.3	145	228
42	9	3	14	0.1	41	55
43	Fats and oils (processed), waxes and inedible mixtures or preparations, of animal or vegetable origin, n.e.s.					
	8	5	7	—	42	47
	39	41	56	0.4	227	330
5	Chemicals and related products, n.e.s.					
51	12	11	8	0.1	81	79
52	63	77	67	0.5	504	545
53	54	34	50	0.4	409	393
54	300	303	251	1.9	2 444	2 582
55	Essential oils and resinoids and perfume materials; toilet, polishing and cleansing preparations					
	49	40	44	0.3	323	370
56	14	11	10	0.1	116	219
57	33	22	25	0.2	222	244
58	29	20	23	0.2	241	218
59	73	67	70	0.5	517	584
	626	586	547	4.1	4 858	5 232
6	Manufactured goods classified chiefly by material					
61	40	20	31	0.2	271	248
62	22	21	20	0.2	135	173
63	15	9	17	0.1	118	105
64	Paper, paperboard, and articles of paper pulp, of paper or of paperboard					
	54	48	53	0.4	465	437
65	38	19	28	0.2	271	264
66	50	52	66	0.5	607	521
67	126	108	120	0.9	704	872
68	1 274	736	944	7.0	8 888	8 158
69	93	63	84	0.6	664	691
	1 712	1 075	1 362	10.1	12 122	11 468
7	Machinery and transport equipment					
71	123	68	121	0.9	808	826
72	159	99	146	1.1	1 001	1 159
73	20	10	15	0.1	110	140
74	General industrial machinery and equipment, n.e.s. and machine parts, n.e.s.					
	157	94	132	1.0	1 039	1 115
75	103	95	102	0.8	781	854
76	Telecommunications and sound recording and reproducing apparatus and equipment					
	71	56	54	0.4	557	505
77	Electrical machinery, apparatus, appliances, parts (incl. non-electrical counterparts of electrical domestic equip)					
	169	122	149	1.1	1 146	1 256
78	422	211	416	3.1	2 400	2 957
79	107	65	96	0.7	573	744
	1 331	821	1 232	9.1	8 415	9 556

— nil or rounded to zero (including null cells)

(b) Per cent of total merchandise is calculated for the most recent month.

(a) Some SITC sections and divisions exclude commodities subject to a confidentiality restriction. These are included in Division 98. For more information see paragraph 17 of the Explanatory Notes.

	Dec 2007	Jan 2008	Feb 2008	Per cent of total merchandise exports(b)	8 MONTHS ENDED FEBRUARY	
					2007	2008
					\$m	\$m
SECTION AND DIVISION OF THE SITC						
8	Miscellaneous manufactured articles					
81	Prefabricated buildings; sanitary, plumbing, heating and lighting fixtures and fittings, n.e.s.					
	10	6	8	0.1	75	94
82	Furniture, parts thereof; bedding, mattresses, mattress supports, cushions and similar stuffed furnishings					
	10	5	6	—	88	72
83	Travel goods, handbags and similar containers					
	3	2	2	—	20	19
84	Articles of apparel and clothing accessories					
	18	16	26	0.2	161	170
85	Footwear					
	4	3	3	—	27	31
87	Professional, scientific and controlling instruments and apparatus, n.e.s.					
	185	120	150	1.1	1 120	1 241
88	Photographic apparatus, equipment and supplies and optical goods, n.e.s.; watches and clocks					
	27	26	23	0.2	236	213
89	Miscellaneous manufactured articles, n.e.s.					
	208	152	176	1.3	1 507	1 560
	<i>Total Miscellaneous manufactured articles</i>					
	465	329	395	2.9	3 234	3 399
9	Commodities and transactions not classified elsewhere in the SITC					
93	Special transactions and commodities not classified according to kind					
	106	83	103	0.8	879	814
95	Gold coin whether or not legal tender, and other coin being legal tender					
	21	18	30	0.2	129	166
96	Coin (excl. gold coin), not being legal tender					
	—	—	—	—	—	—
97	Gold, non-monetary (excl. gold ores and concentrates)					
	864	1 178	1 148	8.5	6 713	8 078
98	Combined confidential items excl. some of SITC 280 (exports only) and some of SITCs 510 and 520 (imports only)					
	636	554	560	4.2	6 038	5 132
	<i>Total Commodities and transactions not classified elsewhere in the SITC</i>					
	1 628	1 834	1 841	13.6	13 761	14 190
	Total merchandise exports					
	15 527	13 272	13 490	100.0	111 731	112 822
	Balance of Payments Adjustments					
	114	117	121	. .	975	845
	Goods credits (exports) on a Balance of Payments Basis					
	15 641	13 389	13 611	. .	112 706	113 667

. . not applicable
 — nil or rounded to zero (including null cells)

(a) Some SITC sections and divisions exclude commodities subject to a confidentiality restriction. These are included in Division 98. For more information see paragraph 17 of the Explanatory Notes.
 (b) Per cent of total merchandise is calculated for the most recent month.

				Per cent of total merchandise imports(b)	8 MONTHS ENDED FEBRUARY	
	Dec	Jan	Feb		2007	2008
	2007	2008	2008			
	\$m	\$m	\$m	%	\$m	\$m
MAJOR COMMODITIES						
333 Crude petroleum oils	1 484	1 535	1 280	7.7	8 358	10 886
334 Refined petroleum oils	833	993	1 203	7.2	4 871	6 660
542 Medicaments	441	522	520	3.1	4 262	4 223
641 Paper and paperboard	138	159	168	1.0	1 407	1 391
752 Automatic data processing machines	606	538	463	2.8	4 305	4 394
759 Parts and accessories of office machines	179	148	141	0.8	1 449	1 360
764 Telecommunications equipment	490	383	420	2.5	3 880	4 095
781 Passenger motor vehicles	1 317	1 211	1 204	7.2	8 649	9 657
782 Motor vehicles for the transport of goods	501	503	514	3.1	3 348	3 825
784 Parts and accessories of motor vehicles	175	221	213	1.3	1 683	1 752
792 Aircraft and associated equipment	404	199	582	3.5	1 797	2 325
971 Gold, non-monetary	342	752	614	3.7	3 445	4 667

SECTION AND DIVISION OF THE SITC

0	Food and live animals					
00	Live animals other than fish, crustaceans, molluscs and aquatic invertebrates	7	13	27	0.2	89 73
01	Meat and meat preparations	40	35	33	0.2	289 267
02	Dairy products and birds' eggs	58	70	64	0.4	297 393
03	Fish (not marine mammals), crustaceans, molluscs and aquatic invertebrates, and preparations thereof	99	101	87	0.5	856 786
04	Cereals and cereal preparations	49	46	48	0.3	368 427
05	Vegetables and fruit	149	142	131	0.8	926 1 036
06	Sugars, sugar preparations and honey	20	20	18	0.1	136 163
07	Coffee, tea, cocoa, spices, and manufactures thereof	73	79	68	0.4	582 650
08	Feeding stuff for animals (excl. unmilled cereals)	52	39	46	0.3	306 343
09	Miscellaneous edible products and preparations	88	118	119	0.7	876 943
	<i>Total food and live animals</i>	634	664	641	3.8	4 724 5 081
1	Beverages and tobacco					
11	Beverages	112	100	105	0.6	812 924
12	Tobacco and tobacco manufactures	17	15	10	0.1	149 126
	<i>Total beverages and tobacco</i>	129	115	115	0.7	962 1 050
2	Crude materials, inedible, except fuels					
21	Hides, skins and furskins, raw	—	—	—	—	2 2
22	Oil seeds and oleaginous fruits	4	4	3	—	55 38
23	Crude rubber (incl. synthetic and reclaimed)	11	17	14	0.1	121 112
24	Cork and wood	50	59	57	0.3	380 438
25	Pulp and waste paper	24	24	30	0.2	181 204
26	Textile fibres and their wastes (not manufactured into yarn or fabric)	8	11	12	0.1	100 94
27	Crude fertilisers (excl. those of Division 56) and crude minerals (excl. coal, petroleum and precious stones)	14	28	13	0.1	109 144
28	Metalliferous ores and metal scrap	61	51	26	0.2	433 426
29	Crude animal and vegetable materials, n.e.s.	27	32	27	0.2	206 203
	<i>Total crude materials, inedible, except fuels</i>	199	226	182	1.1	1 589 1 661
3	Mineral fuels, lubricants and related materials					
32	Coal, coke and briquettes	1	1	1	—	15 10
33	Petroleum, petroleum products and related materials	2 367	2 587	2 528	15.2	13 483 17 893
34	Gas, natural and manufactured	67	150	118	0.7	686 749
	<i>Total mineral fuels, lubricants and related materials</i>	2 435	2 737	2 647	15.9	14 184 18 652

— nil or rounded to zero (including null cells)

(b) Per cent of total merchandise imports is calculated for the most recent month.

(a) Some SITC sections and divisions exclude commodities subject to a confidentiality restriction. These are included in Division 98. For more information see paragraph 17 of the Explanatory Notes.

	Dec	Jan	Feb	Per cent	8 MONTHS		
	2007	2008	2008	of total	ENDED FEBRUARY		
	\$m	\$m	\$m	merchandise	2007	2008	
				imports(b)			
				%	\$m	\$m	
SECTION AND DIVISION OF THE SITC							
4	Animal and vegetable oils, fats and waxes						
41	Animal oils and fats	2	2	8	—	15	25
42	Fixed vegetable fats and oils, crude, refined or fractionated	29	43	46	0.3	294	319
43	Fats and oils (processed), waxes and inedible mixtures or preparations, of animal or vegetable origin, n.e.s.	4	5	5	—	39	42
	<i>Total animal and vegetable oils, fats and waxes</i>	36	50	59	0.4	349	386
5	Chemicals and related products, n.e.s.						
51	Organic chemicals	206	359	325	2.0	2 232	2 312
52	Inorganic chemicals	87	96	108	0.6	737	771
53	Dyeing, tanning and colouring materials	48	54	49	0.3	408	422
54	Medicinal and pharmaceutical products	564	642	653	3.9	5 125	5 224
55	Essential oils and resinoids and perfume materials; toilet, polishing and cleansing preparations	121	130	130	0.8	1 066	1 114
56	Fertilisers (excl. crude)	92	116	80	0.5	322	575
57	Plastics in primary forms	134	142	132	0.8	1 097	1 173
58	Plastics in non-primary forms	105	112	102	0.6	871	882
59	Chemical materials and products, n.e.s.	154	157	155	0.9	1 165	1 219
	<i>Total chemicals and related products, n.e.s.</i>	1 512	1 809	1 733	10.4	13 023	13 692
6	Manufactured goods classified chiefly by material						
61	Leather, leather manufactures, and dressed furskins, n.e.s.	11	17	14	0.1	96	120
62	Rubber manufactures, n.e.s.	195	204	200	1.2	1 635	1 642
63	Cork and wood manufactures (excl. furniture)	50	61	67	0.4	437	443
64	Paper, paperboard, and articles of paper pulp, of paper or of paperboard	196	212	217	1.3	1 833	1 857
65	Textile yarn, fabrics, made-up articles n.e.s. and related products	196	212	210	1.3	1 671	1 722
66	Non-metallic mineral manufactures, n.e.s.	183	198	212	1.3	1 565	1 645
67	Iron and steel	228	323	279	1.7	2 466	2 339
68	Non-ferrous metals	142	282	168	1.0	1 237	1 401
69	Manufactures of metals, n.e.s.	371	411	411	2.5	3 071	3 284
	<i>Total manufactured goods classified chiefly by material</i>	1 572	1 920	1 776	10.7	14 011	14 452
7	Machinery and transport equipment						
71	Power generating machinery and equipment	344	347	370	2.2	2 515	2 905
72	Machinery specialised for particular industries	590	694	592	3.6	4 595	5 077
73	Metal working machinery	64	60	60	0.4	481	524
74	General industrial machinery and equipment, n.e.s. and machine parts, n.e.s.	792	816	826	5.0	6 933	6 611
75	Office machines and automatic data processing machines	834	733	653	3.9	6 171	6 184
76	Telecommunications and sound recording and reproducing apparatus and equipment	802	652	710	4.3	6 646	7 207
77	Electrical machinery, apparatus, appliances, parts (incl. non-electrical counterparts of electrical domestic equipment)	719	713	696	4.2	5 893	6 045
78	Road vehicles (incl. air-cushion vehicles)	2 176	2 097	2 095	12.6	15 040	16 782
79	Transport equipment (excl. road vehicles)	504	384	627	3.8	2 458	3 110
	<i>Total machinery and transport equipment</i>	6 825	6 496	6 629	39.8	50 732	54 445

— nil or rounded to zero (including null cells)

(b) Per cent of total merchandise imports is calculated for the most recent month.

(a) Some SITC sections and divisions exclude commodities subject to a confidentiality restriction. These are included in Division 98. For more information see paragraph 17 of the Explanatory Notes.

	Dec 2007	Jan 2008	Feb 2008	Per cent of total merchandise imports(b)	8 MONTHS ENDED FEBRUARY		
					2007	2008	
					\$m	\$m	
SECTION AND DIVISION OF THE SITC							
8	Miscellaneous manufactured articles						
81	Prefabricated buildings; sanitary, plumbing, heating and lighting fixtures and fittings, n.e.s.						
	56	61	57	0.3	442	484	
82	Furniture, parts thereof; bedding, mattresses, mattress supports, cushions and similar stuffed furnishings						
	230	219	206	1.2	1 667	1 810	
83	Travel goods, handbags and similar containers						
	57	56	58	0.4	450	495	
84	Articles of apparel and clothing accessories						
	306	442	488	2.9	3 121	3 215	
85	Footwear						
	89	121	125	0.7	870	864	
87	Professional, scientific and controlling instruments and apparatus, n.e.s.						
	374	333	359	2.2	2 728	2 855	
88	Photographic apparatus, equipment and supplies and optical goods, n.e.s.; watches and clocks						
	122	100	100	0.6	928	922	
89	Miscellaneous manufactured articles, n.e.s.						
	741	715	815	4.9	6 368	6 561	
	<i>Total miscellaneous manufactured articles</i>	<i>1 975</i>	<i>2 047</i>	<i>2 209</i>	<i>13.3</i>	<i>16 574</i>	<i>17 207</i>
9	Commodities and transactions not classified elsewhere in the SITC						
93	Special transactions and commodities not classified according to kind						
	3	7	3	—	26	28	
95	Gold coin whether or not legal tender, and other coin being legal tender						
	1	1	1	—	3	4	
96	Coin (excl. gold coin), not being legal tender						
	—	—	—	—	1	—	
97	Gold, non-monetary (excl. gold ores and concentrates)						
	342	752	614	3.7	3 445	4 667	
98	Combined confidential items excl. some of SITC 280 (exports only) and some of SITCs 510 and 520 (imports only)						
	35	53	47	0.3	143	358	
	<i>Total commodities and transactions not classified elsewhere in the SITC</i>	<i>381</i>	<i>813</i>	<i>665</i>	<i>4.0</i>	<i>3 618</i>	<i>5 058</i>
	Total merchandise imports	15 698	16 877	16 657	100.0	119 765	131 685
	Balance of Payments Adjustment	182	190	258	..	1 833	1 924
	Goods Debits (imports) on a Balance of Payments Basis	15 880	17 067	16 915	..	121 598	133 609

.. not applicable

— nil or rounded to zero (including null cells)

(a) Some SITC sections and divisions exclude commodities subject to a confidentiality restriction. These are included in Division 98. For more information see paragraph 17 of the Explanatory Notes.

(b) Per cent of total merchandise imports is calculated for the most recent month.

	EXPORTS				IMPORTS				BALANCE OF MERCHANDISE TRADE	
	2006-07	February	8 months ended	8 months ended	2006-07	February	8 months ended	8 months ended	2006-07	8 months ended
		2008	February 2007	February 2008		2008	February 2007	February 2008		February 2008
	\$m	\$m	\$m	\$m	\$m	\$m	\$m	\$m		
Belgium	1 318	57	850	861	1 607	151	1 076	1 115	-288	-254
Brazil	853	34	577	589	859	72	592	619	-6	-29
Canada	1 768	124	1 180	1 108	2 077	243	1 382	1 475	-309	-367
China	22 805	1 700	14 821	16 052	27 140	2 485	18 670	21 246	-4 335	-5 194
Denmark	189	13	129	108	1 138	69	726	568	-949	-459
Egypt(b)	337	27	188	192	17	1	11	13	320	179
Fiji	383	29	267	251	148	10	110	80	235	170
Finland	1 593	89	1 126	647	848	79	535	600	745	47
France	1 364	85	860	899	3 910	342	2 448	3 288	-2 546	-2 389
Germany	1 444	103	961	893	9 274	720	6 162	6 807	-7 830	-5 913
Hong Kong (Sar of China)	3 038	242	2 112	1 860	1 419	103	1 016	980	1 619	880
India	10 103	751	6 544	5 740	1 314	121	905	1 061	8 789	4 679
Indonesia	4 241	285	2 891	2 602	4 647	309	3 028	2 991	-405	-389
Iran	208	6	129	118	41	3	29	26	167	92
Iraq	96	1	94	8	36	23	36	23	61	-15
Ireland	209	33	124	165	2 120	152	1 387	1 276	-1 911	-1 111
Israel	188	17	121	125	640	43	417	386	-451	-262
Italy	1 742	92	1 221	984	4 869	403	3 309	3 235	-3 127	-2 251
Japan	32 623	2 478	22 069	21 037	17 400	1 734	11 446	12 666	15 224	8 371
Korea, Republic of	13 086	1 035	8 873	9 005	6 014	490	4 078	4 043	7 071	4 962
Kuwait	493	36	332	374	231	—	120	213	262	161
Malaysia	3 103	338	1 999	2 145	6 603	729	4 168	5 280	-3 501	-3 134
Mexico	837	43	623	368	1 102	100	736	782	-266	-414
Netherlands	2 976	268	1 899	1 738	1 494	114	991	965	1 482	773
New Zealand	9 435	686	6 277	6 315	5 615	613	3 639	4 635	3 821	1 680
Pakistan	321	55	230	389	151	16	98	102	170	287
Papua New Guinea	1 524	99	979	1 076	2 215	157	1 420	1 855	-692	-779
Philippines	1 056	89	684	851	753	41	507	539	303	313
Saudi Arabia	2 025	257	1 316	1 401	946	20	559	644	1 079	757
Singapore	4 637	512	3 214	3 134	10 126	1 339	6 701	7 805	-5 489	-4 671
South Africa	2 320	158	1 533	1 687	1 402	89	953	945	918	742
Spain	1 254	48	862	577	1 625	175	1 011	1 298	-371	-721
Sweden	351	19	239	234	2 287	195	1 510	1 601	-1 936	-1 367
Switzerland	1 130	11	561	791	1 916	150	1 328	1 359	-786	-568
Taiwan	6 191	570	4 040	3 889	4 409	342	2 905	2 899	1 782	990
Thailand	4 256	258	2 613	2 717	7 222	755	4 800	5 758	-2 966	-3 041
Turkey	527	68	318	398	437	26	310	249	90	149
United Arab Emirates	2 393	133	1 385	1 931	1 747	238	1 123	1 644	647	287
United Kingdom	6 146	780	4 466	5 943	7 407	606	4 677	5 441	-1 261	502
United States of America	9 803	850	6 453	6 801	24 908	2 289	16 379	15 839	-15 105	-9 039
Viet Nam	1 629	189	1 165	1 111	4 504	298	3 308	3 468	-2 875	-2 357
Other Countries	8 105	822	5 410	5 707	8 186	808	5 160	5 867	-81	-160
Total	168 099	13 490	111 731	112 822	180 801	16 657	119 765	131 685	-12 703	-18 863
APEC	121 024	9 590	80 667	80 747	128 462	12 310	85 642	94 095	-7 438	-13 349
ASEAN	19 051	1 680	12 650	12 653	34 969	3 574	23 268	26 630	-15 918	-13 977
Developing Countries	87 416	7 135	57 587	58 437	84 720	7 951	56 789	63 985	2 695	-5 548
Least Developed Countries	1 567	154	1 063	1 017	246	14	176	168	1 320	849
European Union(c)	19 144	1 641	13 083	13 476	39 018	3 205	25 447	27 937	-19 874	-14 461
OECD	88 259	6 921	59 402	59 208	99 398	8 943	65 321	69 655	-11 139	-10 447

— nil or rounded to zero (including null cells)

(a) See Time series spreadsheets for details of all countries.

(b) Exports of Alumina to Egypt are excluded from country total and included in the 'Other Countries' category.

(c) The European Union includes 27 member countries.

	8 MONTHS ENDED FEBRUARY			
	2006-07	February 2008	2007	2008
	\$m	\$m	\$m	\$m
EXPORTS (a)				
New South Wales	28 062	2 217	18 756	18 967
Victoria	20 049	1 779	13 244	13 476
Queensland	35 439	2 076	23 753	21 138
South Australia	9 016	800	5 789	6 561
Western Australia	60 509	5 489	40 116	42 712
Tasmania	3 713	207	2 496	2 247
Northern Territory	4 013	333	2 803	2 728
Australian Capital Territory	8	—	6	4
State not available for publication(b)	809	98	544	577
Re-exports	6 479	490	4 223	4 412
Total exports	168 099	13 490	111 731	112 822
IMPORTS				
New South Wales	69 791	6 125	46 606	50 303
Victoria	51 326	4 660	34 036	36 814
Queensland	27 198	2 785	17 793	20 528
South Australia	6 584	608	4 417	4 752
Western Australia	22 125	2 247	14 378	17 251
Tasmania	614	55	436	445
Northern Territory	2 846	177	1 784	1 587
Australian Capital Territory	317	—	314	7
Total imports	180 801	16 657	119 765	131 685

— nil or rounded to zero (including null cells)

(a) State in which the final stage of production or manufacture occurs.

(b) Exports of Alumina to Bahrain, Egypt and Iceland are excluded from the state totals and included in 'State not available for publication category'.

PERIOD AVERAGE EXCHANGE RATES(a): Per Australian dollar

<i>Period</i>	<i>United States dollar</i>	<i>UK pound sterling</i>	<i>Euro</i>	<i>Japanese yen</i>	<i>Trade-weighted index of value of the A\$(b)</i>
FINANCIAL YEAR					
2004-05	0.7529	0.4052	0.5918	80.45	62.7
2005-06	0.7474	0.4205	0.6143	85.90	63.3
2006-07	0.7863	0.4066	0.6018	93.21	64.8
MONTHS					
2006					
December	0.7861	0.4002	0.5949	92.05	64.4
2007					
January	0.7839	0.4002	0.6027	94.28	64.7
February	0.7823	0.3993	0.5981	94.29	64.4
March	0.7919	0.4067	0.5980	92.90	64.8
April	0.8263	0.4156	0.6117	98.17	67.1
May	0.8252	0.4157	0.6103	99.58	67.0
June	0.8423	0.4238	0.6274	103.34	68.5
July	0.8675	0.4266	0.6325	105.47	69.7
August	0.8282	0.4123	0.6083	96.63	66.8
September	0.8464	0.4196	0.6088	97.34	67.7
October	0.8984	0.4397	0.6316	104.04	71.0
November	0.8987	0.4335	0.6121	99.88	70.0
December	0.8726	0.4314	0.5987	97.88	68.2
2008					
January	0.8815	0.4479	0.5993	95.16	68.2
February	0.9128	0.4647	0.6192	97.84	70.2

- (a) These exchange rates and the trade-weighted index are derived using rates provided by the Reserve Bank of Australia in respect of each trading day.
- (b) May 1970 = 100. The Trade-weighted index is reweighted annually on 1 October and on special occasions as required.

EXPLANATORY NOTES

INTRODUCTION

1 This publication presents preliminary estimates of Australia's international trade in goods and services on a balance of payments basis and merchandise import and export statistics on a recorded trade basis.

2 Merchandise trade statistics on a recorded trade basis are compiled from information submitted by exporters and importers or their agents to the Australian Customs Service (ACS). Adjustments for coverage, timing and valuation are made to recorded trade data to convert them to a balance of payments basis. The main source for services data is the quarterly Survey of International Trade in Services.

3 More comprehensive quarterly estimates of Australia's trade in goods and services, together with comprehensive details of Australia's balance of payments are included in the quarterly publication, *Balance of Payments and International Investment Position, Australia* (cat. no. 5302.0). Detailed monthly statistics on merchandise trade are available on Time Series Spreadsheets or by subscription to tailored services.

CONCEPTS, SOURCES AND METHODS

4 The conceptual framework used in compiling Australia's merchandise trade statistics can be found in *International Merchandise Trade, Australia: Concepts, Sources and Methods, 2001* (cat. no. 5489.0).

5 The conceptual framework used in compiling Australia's balance of payments statistics is based on the Fifth Edition of the International Monetary Fund's *Balance of Payments Manual* (BPM5,1993). Descriptions of the underlying concepts and structure of the balance of payments and the sources, methods and terms used in compiling the estimates are presented in *Balance of Payments and International Investment Position, Australia: Concepts, Sources and Methods, 1998* (cat. no. 5331.0). To bring merchandise trade statistics on a recorded trade basis to a balance of payments basis, timing adjustments are made to ensure that the transaction is recorded in the period in which ownership changed, rather than in the period in which the transaction was recorded by ACS. Adjustments are also made to account for the change of ownership of goods not included in merchandise trade statistics. Chapter 6 of cat. no. 5331.0 provides more detail on the relationship between statistics on international merchandise trade on a recorded trade basis and on a balance of payments basis.

6 Both of the Concepts, Sources and Methods publications are available to download for free from the ABS website. Select *Methods, Classifications, Concepts & Standards*, then choose *ABS concepts, classifications and statistical standards* and then the catalogue numbers as above.

SEASONAL ADJUSTMENT

7 The estimates of international trade in goods and services on a balance of payments basis are seasonally adjusted, however the merchandise exports and imports statistics on a recorded trade basis are not. Monthly original estimates are volatile, being subject to calendar-related and large irregular influences. Seasonally adjusted estimates are derived by estimating and removing from the original series systematic calendar related effects, such as seasonal, trading day, length of month and moving holiday influences. Seasonal adjustment does not aim to remove the irregular or non-seasonal influences which may be present in any particular month. These irregular influences may reflect both random economic events and difficulties of statistical recording.

8 The seasonally adjusted statistics in this publication use the concurrent seasonal adjustment technique and Autoregressive Integrated Moving Average (ARIMA) Modelling to estimate factors for the current and previous months. Under concurrent seasonal adjustment, the estimates of seasonal factors are fine tuned as new original estimates become available each period. The seasonally adjusted estimates are subject to revisions at each reference month as the estimates of seasonal factors are improved. For more information on seasonal adjustment methods, see *Information Paper: An Introductory Course on Time Series Analysis, Jan 2005* (cat. no. 1346.0.55.001), *Time Series Analysis*

EXPLANATORY NOTES *continued*

SEASONAL ADJUSTMENT

continued

Frequently Asked Questions, 2003 (cat. no. 1346.0.55.002), alternatively contact the Assistant Director, Time Series Analysis on (02) 6252 6345 or e-mail <time.series.analysis@abs.gov.au>.

ARIMA MODELLING

9 ARIMA modelling relies on the characteristics of the series being analysed to project future period data. ARIMA modelling is used on a case-by-case basis where it results in reduced revisions to seasonally adjusted series when subsequent data become available. The projected values are temporary, intermediate values, that are only used internally to improve the estimation of the seasonal factors. The projected data do not affect the original estimates and are discarded at the end of the seasonal adjustment process. The ARIMA model is assessed as part of the annual reanalysis and, following the 2007 annual re-analysis, 89% of trade in goods and services time series use an ARIMA model. For more information on the details of ARIMA modelling see *Feature article: Use of ARIMA modelling to reduce revisions* in the October 2004 issue of *Australian Economic Indicators* (cat. no. 1350.0).

TREND ESTIMATES

10 The month-to-month movements of the seasonally adjusted estimates may not be reliable indicators of trend behaviour because they include irregular or non-seasonal movements. Trend estimates are derived by applying a 13-term Henderson moving average to the seasonally adjusted series. The use of a 13-term Henderson average can result in revisions to the estimates for the most recent six months as additional observations become available. Revisions can also occur because of changes in the original data and as a result of the re-estimation of the seasonal factors. For more information on trend estimates methods, see *Information Paper: A Guide to Interpreting Time Series - Monitoring Trends* (cat. no. 1349.0), alternatively contact the Assistant Director, Time Series Analysis on (02) 6252 6345 or e-mail <time.series.analysis@abs.gov.au>.

SIGN CONVENTION

11 In keeping with balance of payments conventions, where statistics are on a balance of payments basis, credit entries (exports) are shown without sign and debit items (imports) are shown as negative entries. For statistics on a recorded trade basis, both imports and exports are shown without sign. The calculation of percentage changes on balance of payments debit items are made without regard to sign. References to balance of payments debit items in Key Figures, Key Points, and Analysis and Comments are also made without regard to sign.

COMMODITY BREAKDOWNS OF GOODS

12 For details of the classification used for goods exports on a balance of payments basis (credits), see table 6.6 in *Balance of Payments and International Investment Position, Australia: Concepts, Sources and Methods, 1998* (cat. no. 5331.0).

13 Details of the classification of goods imports on a balance of payments basis (debits) are provided in table 6.7 in cat. no. 5331.0.

14 The recorded trade statistics shown in tables 12 and 13 are classified by the Standard International Trade Classification (SITC). The first section of tables 12 and 13 show the most significant commodities (by value) at the SITC 3 digit level. Imports and exports of goods at a more detailed level are available from the Time Series spreadsheets.

COMMODITY BREAKDOWNS OF SERVICES

15 The quarterly detailed services data published in table 11 are consistent with the monthly aggregates shown in table 9.

16 Monthly indicators for many of the services components that are only surveyed quarterly are not available. In particular, the Freight and Other transportation components of Total services credits are not available for publication on a monthly basis. The estimates for these items shown in table 9 are therefore derived by dividing the quarterly estimate by three. Where quarterly survey data are not available, freight debits

EXPLANATORY NOTES *continued*

COMMODITY BREAKDOWNS OF SERVICES *continued*

are derived directly from imports data for the reference month as a difference between total merchandise cost, insurance and freight (CIF) and free on board (FOB), adjusted to reflect timing and processing adjustments. For freight credits and other transportation credits and debits, estimates are derived by extrapolating the last month's data by an average of movements for the same month over the three previous years.

CONFIDENTIALITY OF MERCHANDISE TRADE STATISTICS

17 The release of statistics for certain merchandise trade commodities is restricted in order to prevent the identification of the activities of an individual business, where this is requested by the business concerned. These restrictions do not affect the total value of exports and imports, but they can affect statistics at the country, state and commodity levels. For information on the confidentiality restrictions applied to the merchandise trade statistics in this publication, refer to the current *International merchandise trade: Confidential Commodities List (CCL)* (cat. no. 5372.0.55.001) which can be accessed from ABS web site.

TOURISM RELATED SERVICES

18 The tourism related services memorandum items provide timely indicators of the movements in tourism related activities, not an absolute measure of the level of these activities. These series are not compiled on a balance of payments conceptual basis. However, they do provide a reasonable approximation of world tourism related activities.

19 The memorandum items have been derived by re-aggregating relevant components of the international trade in services series of the balance of payments accounts. The tourism related indicator has been derived by combining total travel services (business, education-related and other personal travel), passenger fares, and the air transport component of other transportation services which relates to agency fees and commission receipts.

SERVICES BY STATE AND BY PARTNER COUNTRY

20 Annual services data by state and by partner country are released twice yearly. Calendar year data are usually released with the March issue of this publication and financial year data are released with the September issue. Refer to Time series data for details.

21 Services credits are classified by the state of provision, while services debits are classified by the state of consumption. The state allocations for transportation, travel and communication services are based on a number of indicators including merchandise trade statistics by state, overseas passenger arrivals and departures by state of clearance and data provided by the Department of Education, Science and Training. The allocation for other services (about 25% of all trade in services) is primarily based on the location of the business reporting the information, which serves as a proxy for the state of provision/consumption of that service. The data should be used with care but are considered suitable for analysis over time.

22 A comprehensive explanation of the data sources used and the methodology applied in the compilation of partner country statistics is provided in Chapter 17 of *Balance of Payments and International Investment Position, Australia - Concepts, Sources and Methods* (cat. no. 5331.0). Approximately 7% of total services credits and 5% of total services debits for 2006–07 are either confidential, or unable to be allocated to individual countries.

ABS DATA AVAILABLE

23 More detailed balance of payments and recorded merchandise trade data, including forward seasonal factors are available as time series spreadsheets or data cubes from the ABS website.

24 More detailed merchandise trade data by commodity, country and state, and statistics included in this and related publications are available on request. Inquiries should be made to the National Information and Referral Service as shown on the back of this publication.

EXPLANATORY NOTES *continued*

RELATED PRODUCTS AND PUBLICATIONS

25 Users may also wish to refer to the following publications which can be downloaded free of charge from the ABS web site:

- *Balance of Payments and International Investment Position, Australia* (cat. no. 5302.0) – issued quarterly
- *International Merchandise Imports, Australia* (cat. no. 5439.0) – issued monthly
- *International Trade Price Indexes, Australia* (cat. no. 6457.0) – issued quarterly
- *Balance of Payments and International Investment Position, Australia: Concepts, Sources and Methods* (cat. no. 5331.0)
- *Information Paper: Quality of Australian Balance of Payments Statistics* (cat. no. 5342.0)
- *International Merchandise Trade, Australia: Concepts, Sources and Methods* (cat. no. 5489.0)
- *A Guide to Australian Balance of Payments and International Investment Position Statistics* (cat. no. 5362.0.55.001).

26 Current publications produced by the ABS are listed in the Catalogue of Publications and Products (cat. no. 1101.0). The Catalogue is available from any ABS office or from this site. The ABS also issues a daily Release Advice on the web site which details products to be released in the week ahead.

CAUTIONARY NOTE

27 The tables in this publication are presented on two bases. Tables 1–11 contain estimates of Australia's international trade in goods and services which have been adjusted for coverage, valuation and timing to a balance of payments basis. Tables 12–15 contain estimates of merchandise exports and imports based on Australian Customs Service records. Paragraph 5 of the Explanatory Notes provides an explanation of the difference between these bases.

ROUNDING

28 Where figures have been rounded, discrepancies may occur between sums of the component items and totals. Percentage movements are calculated from data at the level of precision presented in this publication (i.e. \$m) except for international merchandise trade tables.

APPENDIX RELATED ARTICLES

<i>Article</i>	<i>Source(a)</i>	<i>Issue</i>
Investment		
Foreign ownership of equity	5302.0	Sep qtr 2007
Kangaroo bonds	5302.0	Sep qtr 2004
Gross external debt	5302.0	Sep qtr 2003
Measuring Australia's foreign currency exposure	5302.0	Dec qtr 2001
Balance of payments		
International comparison of balance of payments statistics	(b) 5363.0	1999–2000
The Sydney Olympic Games Update	5368.0	Jul 2000
The Sydney Olympic Games	5302.0	Sep qtr 1999
Merchandise trade		
Number and characteristics of Australian exporters	5368.0.55.006	2006–2007
New methodology for deriving counts of Australian exports	5368.0	Feb 2006
Export and Import Invoice Currencies, 2007	5368.0	Dec 2007
Australia's Importers, 2003–04	5368.0	Nov 2004
Australia's Exporters, 2003–04	5368.0	Oct 2004
Australia's Trade with the USA	5368.0	Mar 2004
Trade through Australia's ports	5422.0	Sep qtr 2002
Australia's trade in wine	5422.0	Dec qtr 2001
Australia's export markets, 1991–92 to 2000–01	5422.0	Jun qtr 2001
Major commodities traded by Australia, 1991 to 2000	(b) 5422.0	Dec qtr 2000
Australia's trade in crude petroleum	5422.0	Mar qtr 2000
Australia's merchandise trade with the Republic of Korea	5422.0	Sep qtr 1999
Australia's merchandise trade with Japan	5422.0	Mar qtr 1999
Bilateral merchandise trade statistics reconciliation: Australia and the European Union, 1992 to 1997	5422.0	Sep qtr 1998
Trade in services		
International trade in services by partner country, 2006, preliminary	5368.0	Dec 2006
Changes to International Trade in Services Statistics, August 2006	5368.0	Aug 2006
Changes to International trade in services travel statistics	5368.0	Aug 2005
International trade in education services	5302.0	Sep 2001
Finance		
Impact of 2003–2004 farm season on Australian production	1350.0	Oct 2003
Recent trends in construction and first home buyers finance	5609.0	Mar 2002
Household sector data in the financial accounts	5232.0	Mar qtr 2002
Investment Managers	5655.0	Jun qtr 2000
Venture capital, 1999–2000	5611.0	2000–01
Technical information		
Changes to international trade statistics July 2008	5368.0.55.009	Nov 2007
Changes on 1 January 2007 to Statistical Codes in the AHECC and the Customs Tariff	1233.0.55.001	Nov 2006
ABS implementation in January 2007 of revisions to international trade classifications, 2007	5368.0.55.005	June 2006
Revised Treatment of Goods for Processing in Merchandise Trade and Balance of Payments Statistics	5368.0	May 2006
Impact of Customs and ABS changes on import statistics from October 2005	5439.0	Oct 2005
ABS Management of the Impact of the Implementation of the Imports Component of the New Customs System	5439.0	Aug 2005
Changes to country and port classifications	5368.0	May 2003
Implementation of New Customs Systems	5368.0	Aug 2004
The effect of customs changes on export statistics	5422.0	Jun qtr 2002
Harmonized system changes	5422.0	Sep qtr 2001
International trade review: data quality and client queries	5422.0	Jun qtr 2000
Data confidentiality	5422.0	Dec qtr 1999

(a) In the ABS web site home page, select Key Products; Papers & Articles; ABS Articles; Feature Articles by Catalogue Number.

(b) This article can be found in pdf format by referring to the Details page of the specified issue of this publication on the ABS web site and click on Download Now.

FOR MORE INFORMATION . . .

INTERNET **www.abs.gov.au** the ABS website is the best place for data from our publications and information about the ABS.

INFORMATION AND REFERRAL SERVICE

Our consultants can help you access the full range of information published by the ABS that is available free of charge from our website. Information tailored to your needs can also be requested as a 'user pays' service. Specialists are on hand to help you with analytical or methodological advice.

PHONE 1300 135 070

EMAIL client.services@abs.gov.au

FAX 1300 135 211

POST Client Services, ABS, GPO Box 796, Sydney NSW 2001

FREE ACCESS TO STATISTICS

All statistics on the ABS website can be downloaded free of charge.

WEB ADDRESS www.abs.gov.au